



Mississippi Headwaters Habitat Corridor Project HA05 Request: \$6,912,100

Program Goals

- Using fee title acquisitions and RIM conservation easements, this Phase will permanently protect more than **8 miles** of critical shorelands and **2,875 acres** of high quality forested wildlife habitat along the first 400 miles of the Mississippi River, its major tributaries and headwaters lakes/reservoirs for the benefit of fish, game and non-game wildlife, and migratory waterfowl.
- Goals:
 - ** create and expand contiguous protected habitat complexes.
 - ** protect critical fish habitat and reduce forest fragmentation.
 - ** enhance public recreational opportunities.
 - ** protect water quality.

Partners

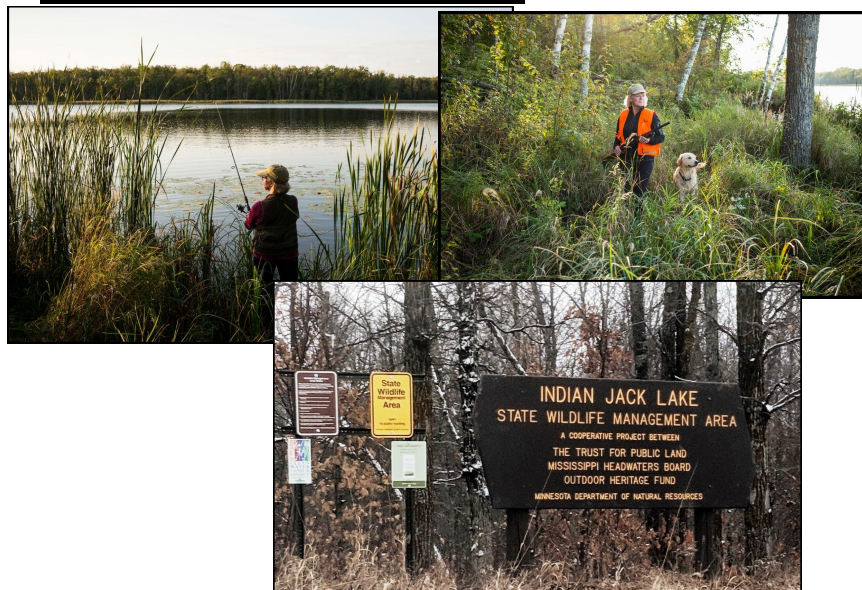
- Mississippi Headwaters Board
- The Trust for Public Land
- BWSR and 8 Headwaters County SWCDs
- With stakeholder support from:
 - The MN DNR
 - The Nature Conservancy



To Date:

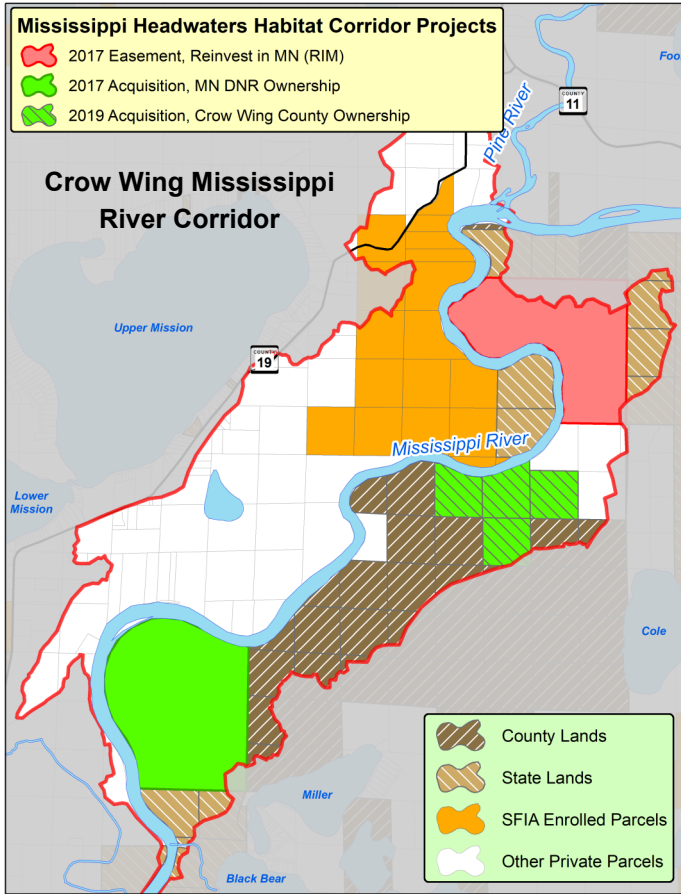
- ⇒ Permanent protection completed on **3,441 acres** and **31 miles** of shoreline. Projected goals were exceeded by 200%.
- ⇒ Projects in process (ML 17,18,20) will protect an additional **1,226 acres** and **11 miles** of shoreline.
- ⇒ Clean Water Funds (\$0.5 M) are committed to two projects under this program to protect an additional **800 acres** and **4 miles of shoreland** for habitat and water quality protection.

| Mississippi Headwaters Habitat Corridor Project | | |
|---|------------------------|--|
| | Appropriations to Date | Amount Remaining |
| ML 16 | \$3,150,000 | Closed out June 30, 2019; final report pending. |
| ML 17 | \$2,396,000 | >95% spent; remainder obligated to projects. |
| ML 18 | \$2,998,000 | |
| ML 20 | \$3,695,000 | Available 7/1/2020; 30% already committed to projects. |

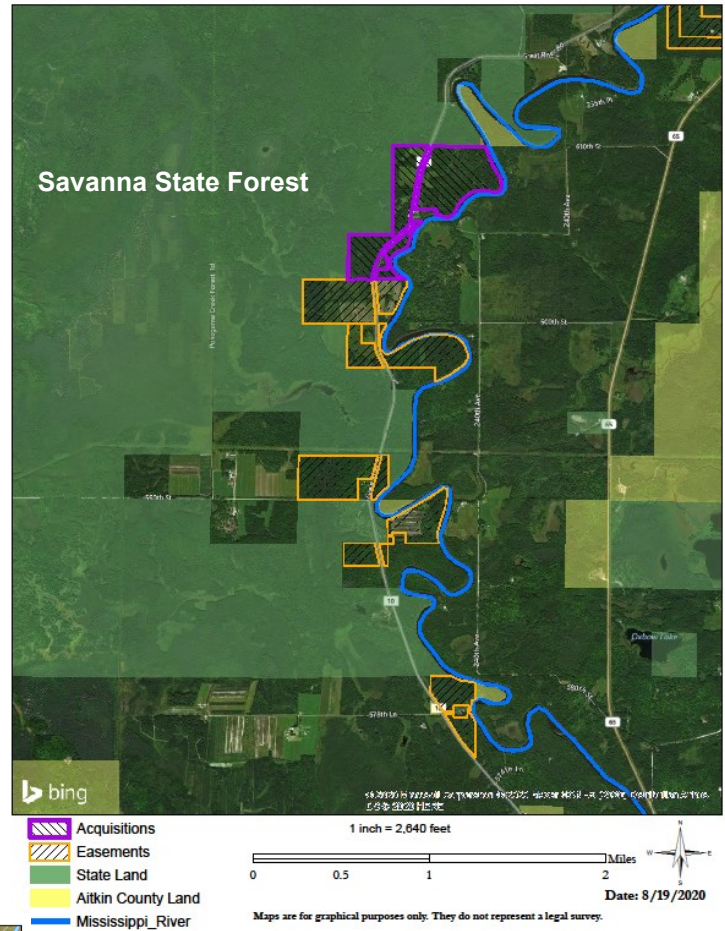




Goal : Permanently protect critical shorelands and wildlife habitat by creating public/private land complexes/corridors.

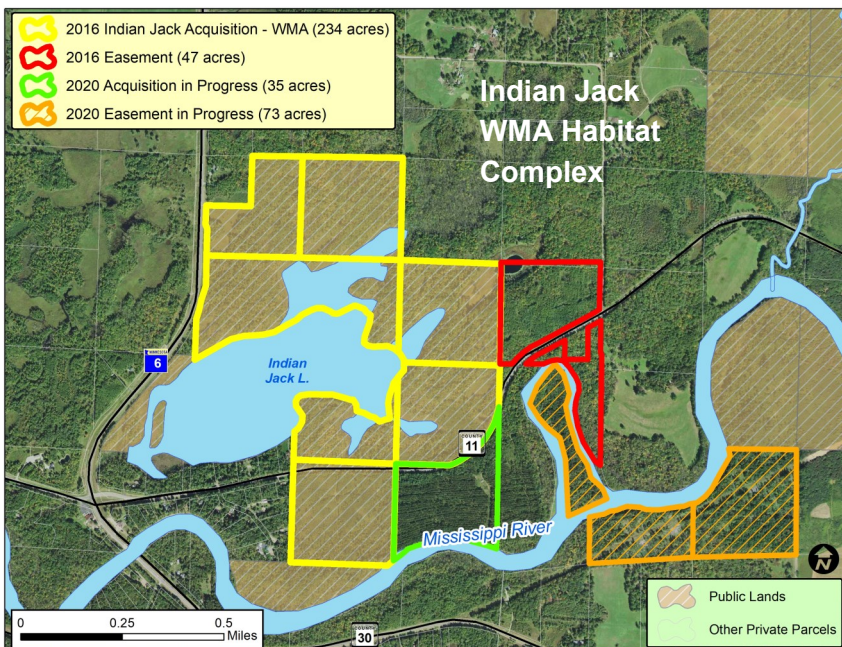


Example 1: Crow Wing Mississippi River Corridor
 Fee title acquisitions (2) combined with conservation easements (2) with adjacency to state and county land created a 1,600+ acre complex of permanently protected habitat along 9 contiguous miles of the Mississippi River in Crow Wing County.



Example 2: Aitkin County Savanna State Forest Habitat Complex

One acquisition and 5 conservation easements along the Mississippi River created 8 contiguous miles of protected shoreland to add to the existing 238,000-acre Savanna State Forest complex.



Example 3: Indian Jack WMA Habitat Protection Complex

The acquisition of 234 acres created the Indian Jack WMA with 4 miles of protected shoreline. The WMA along with an acquisition in process to enlarge the WMA, a completed easement, an easement in process, and all adjacent public land, creates a permanently protected habitat complex of 353 acres north of the river and 240 acres south of the river with 3.5 miles of contiguous river shoreland. The complex also provides public recreational access to the lake and river.